



Bexley
Clinical Commissioning Group

Organisational structure

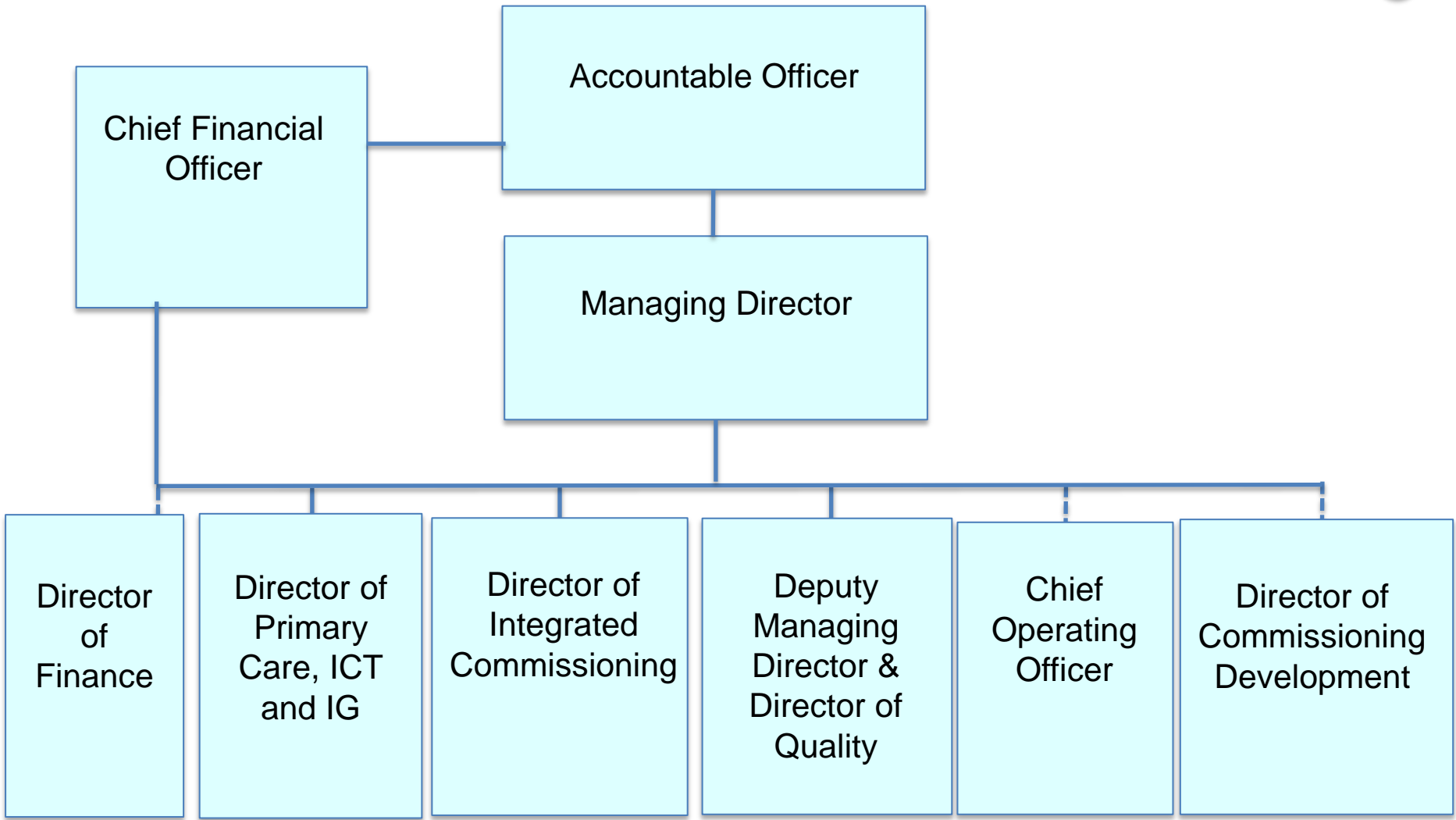
Updated February 2020



Chair Dr Sid Deshmukh	Independent clinical members Dr Koteswara Muralidhara, Secondary Care Specialist Mary Currie, GB Nurse
GP locality leads Dr Jhumur Moir (Clocktower) Dr Sonia Khanna-Deshmukh (Frognal) Dr Varun Bhalla (North Bexley)	Lay members Keith Wood (Deputy chair and Governance Lay Member) Paul Cutler (Patient and Public Involvement Lay Member) Neil Ross (Legal and Procurement Lay Member)
Locality representatives Mark Burgess (Frognal) Drs Clive Anggiansah and Dr Mehal Patel (North Bexley) Lisa Wilson (Clocktower)	Management members Andrew Bland, Accountable Officer Neil Kennett-Brown, Managing Director Michael Boyce, Deputy Managing Director & Director of Quality Nisha Wheeler, Director of Primary Care, ICT and IG Alison Rogers, Acting Director of Integrated Commissioning Usman Niazi, Chief Financial Officer David Maloney, Director of Finance
Independent members Vicky Wilkinson (Bexley Patient Council Representative) Stuart Rowbotham, Director of Adult Social Services (London Borough of Bexley) Dr Anjan Ghosh, Director of Public Health (London Borough of Bexley)	



Directors



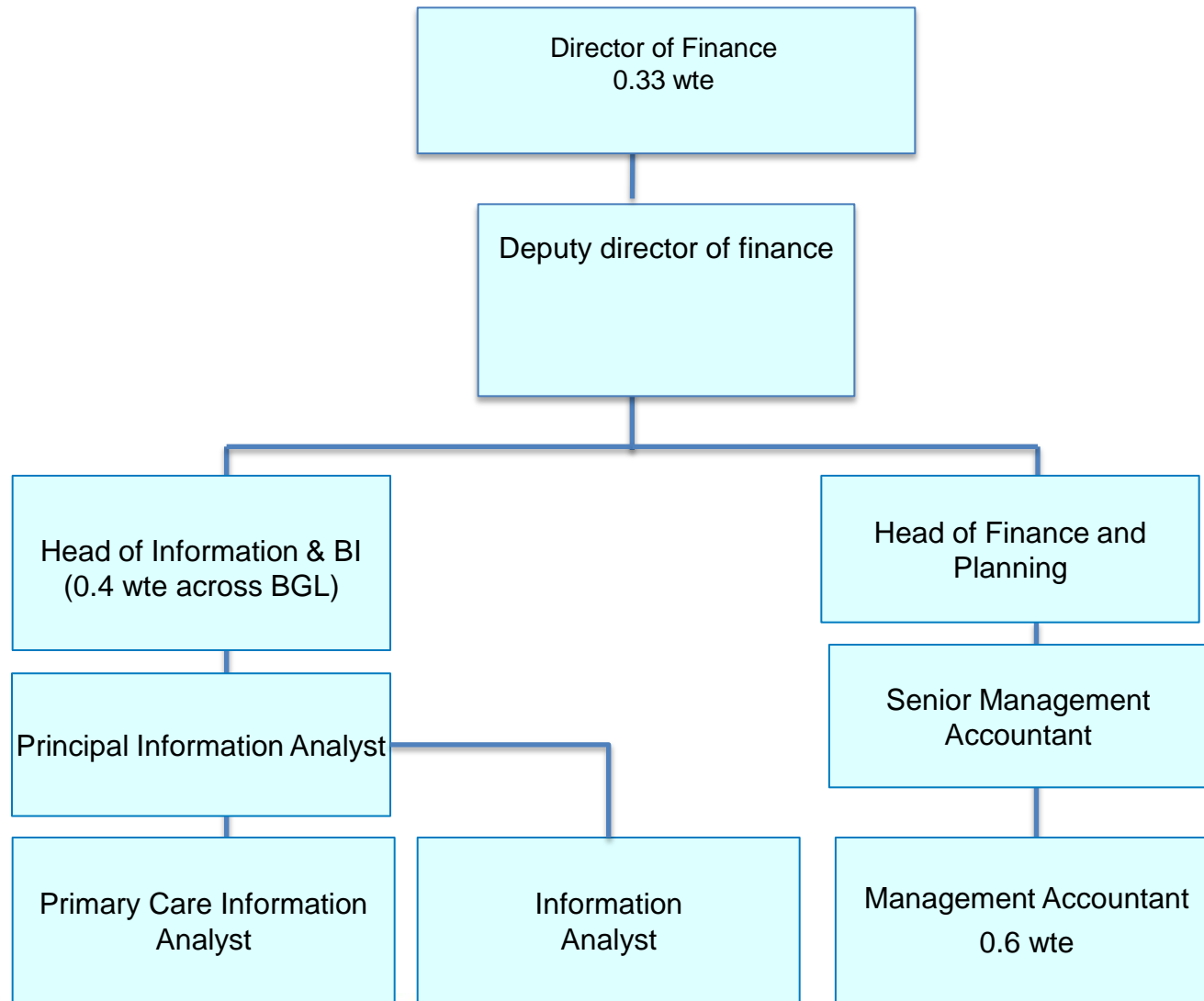
Supporting thriving communities



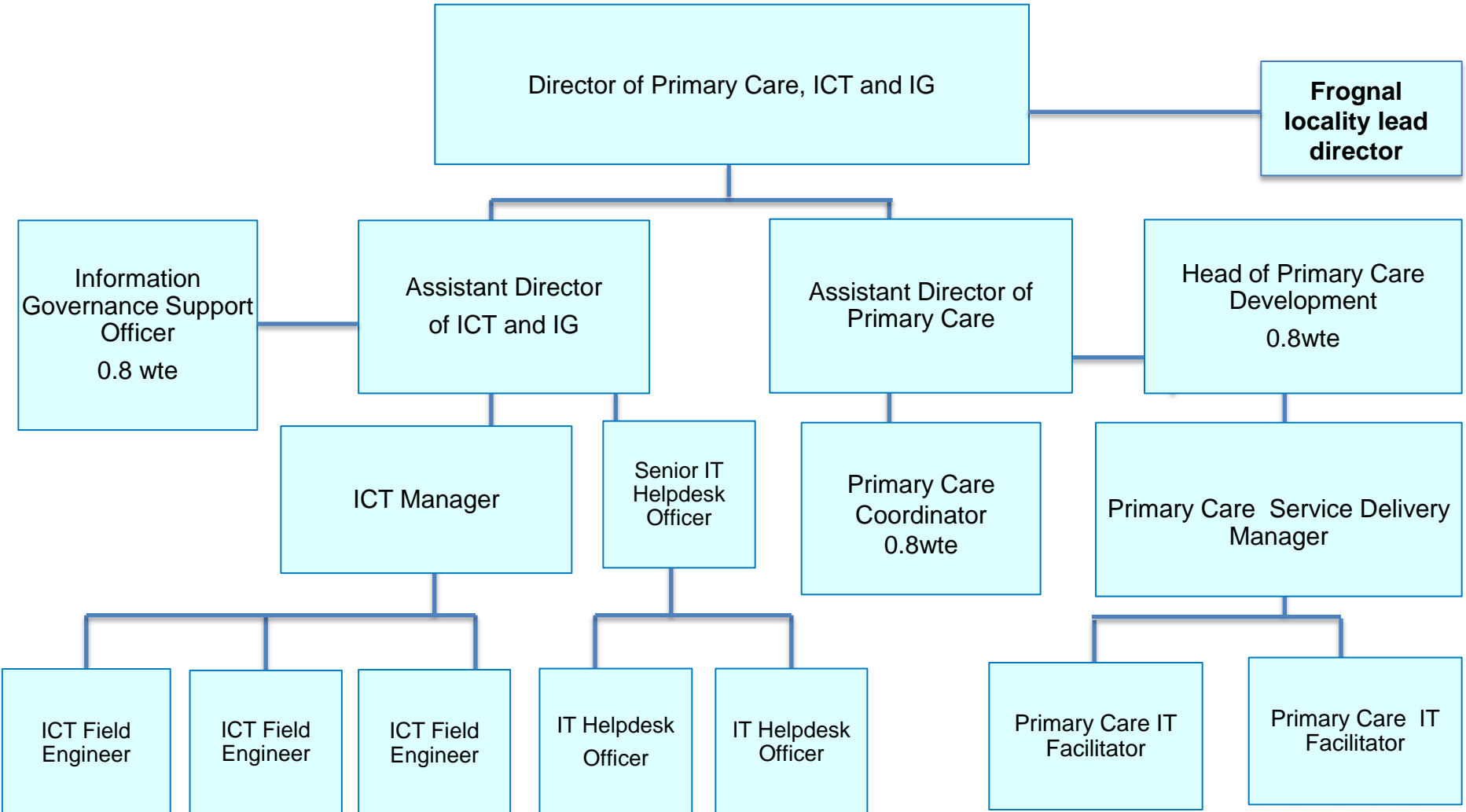
Bexley

Clinical Commissioning Group

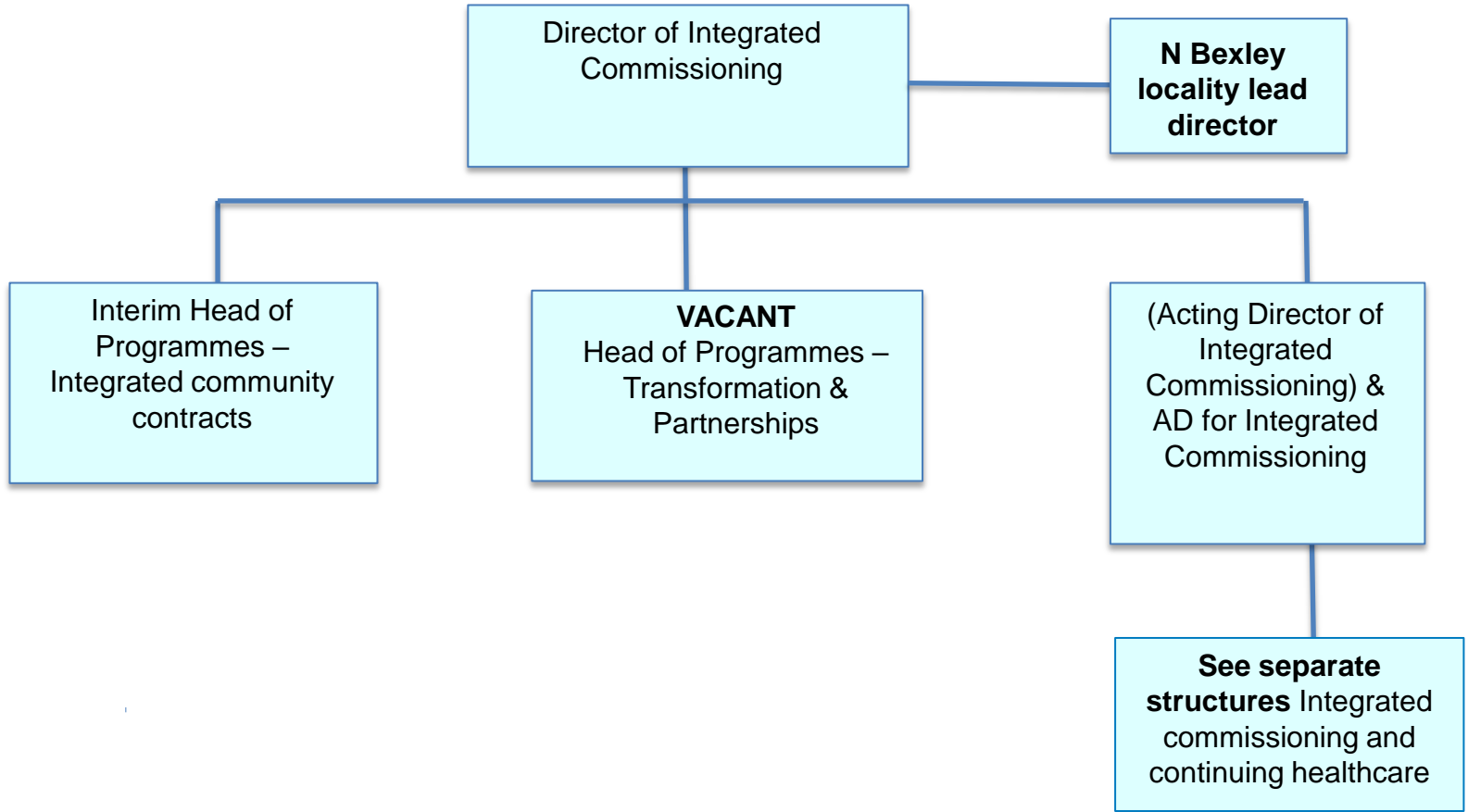
Director of Finance structure



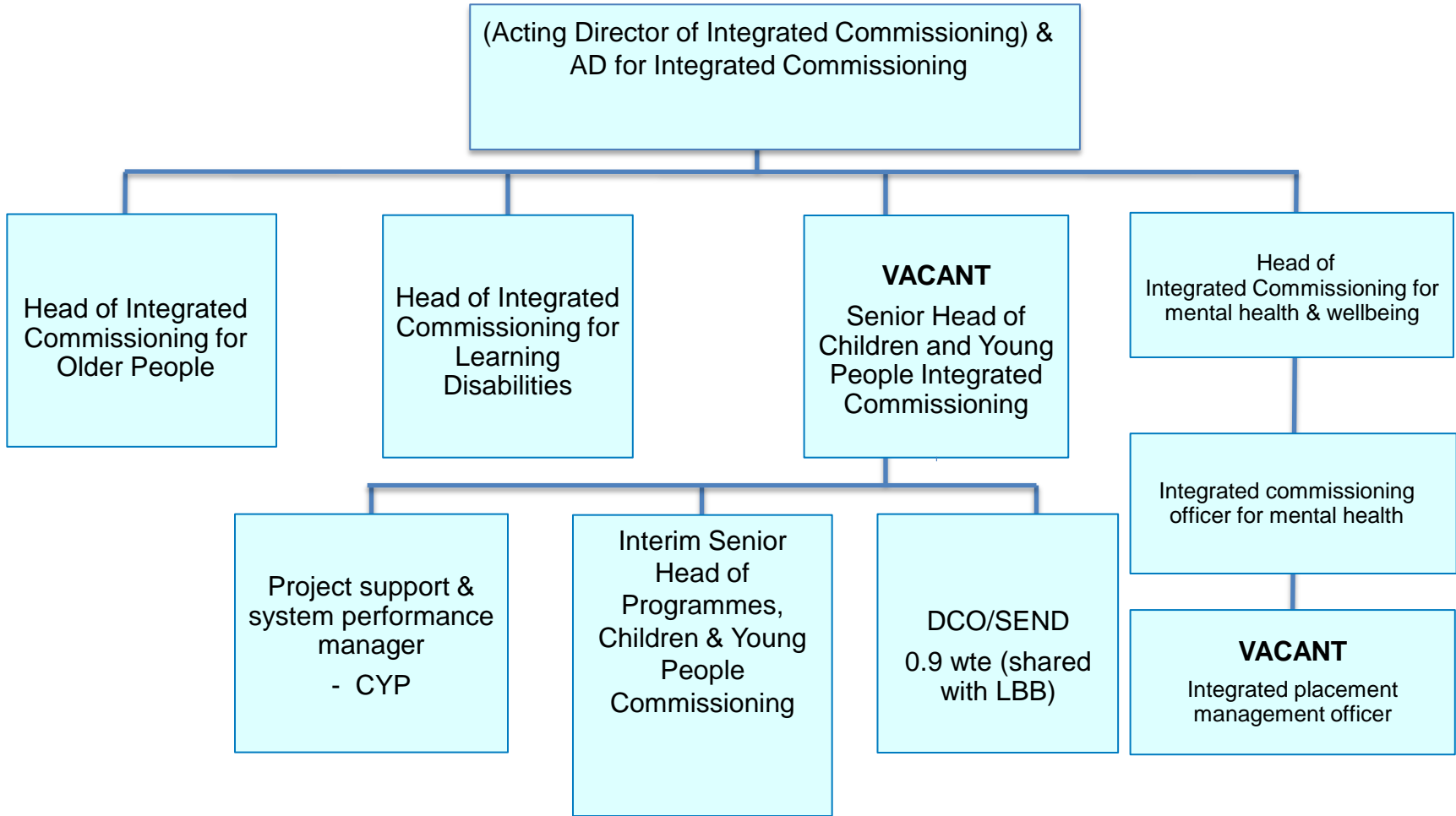
Director of Primary care, ICT and IG structure



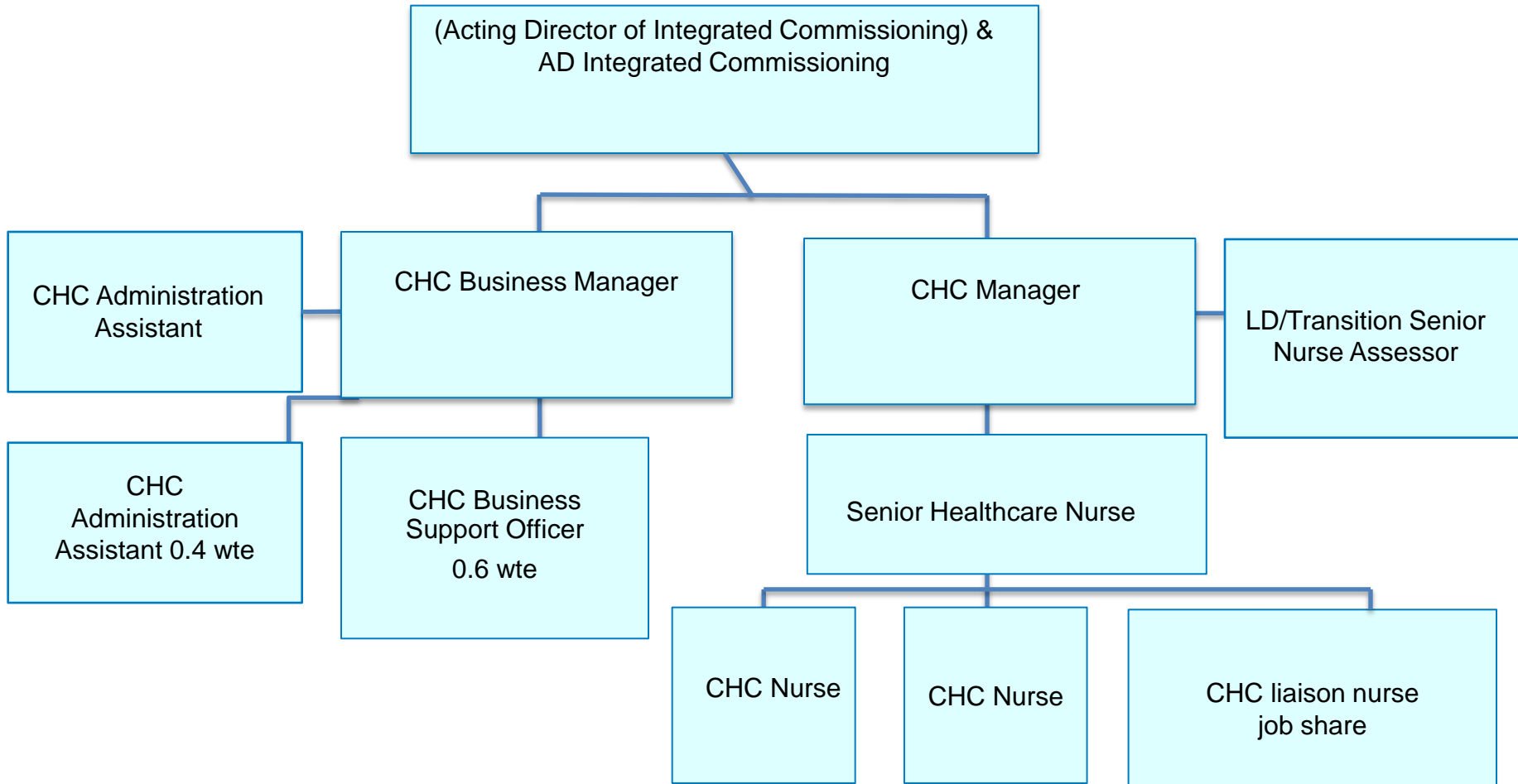
Director of Integrated Commissioning structure – Community & Integrated contracts team



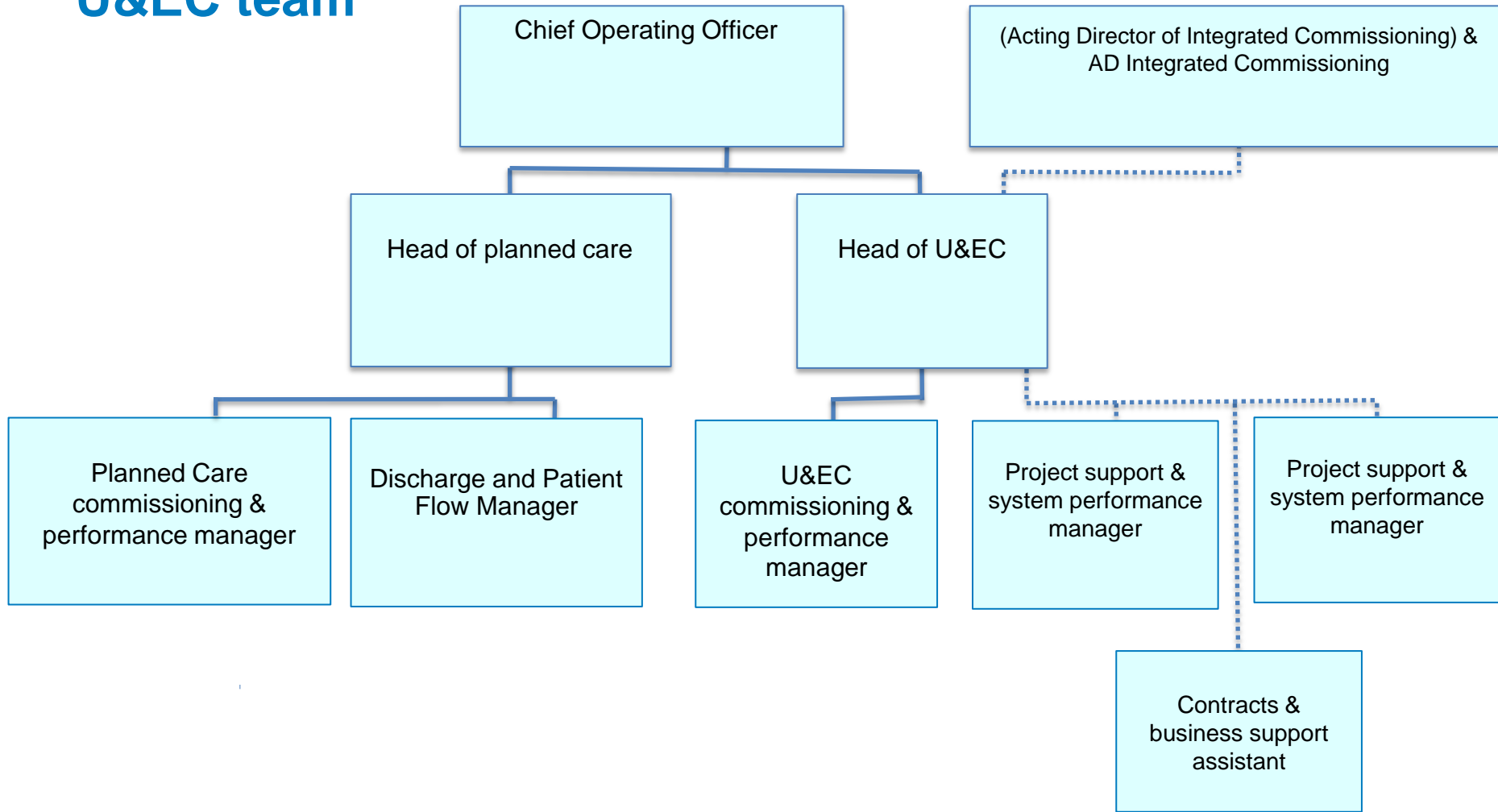
Director of Integrated Commissioning structure – Integrated Commissioning team



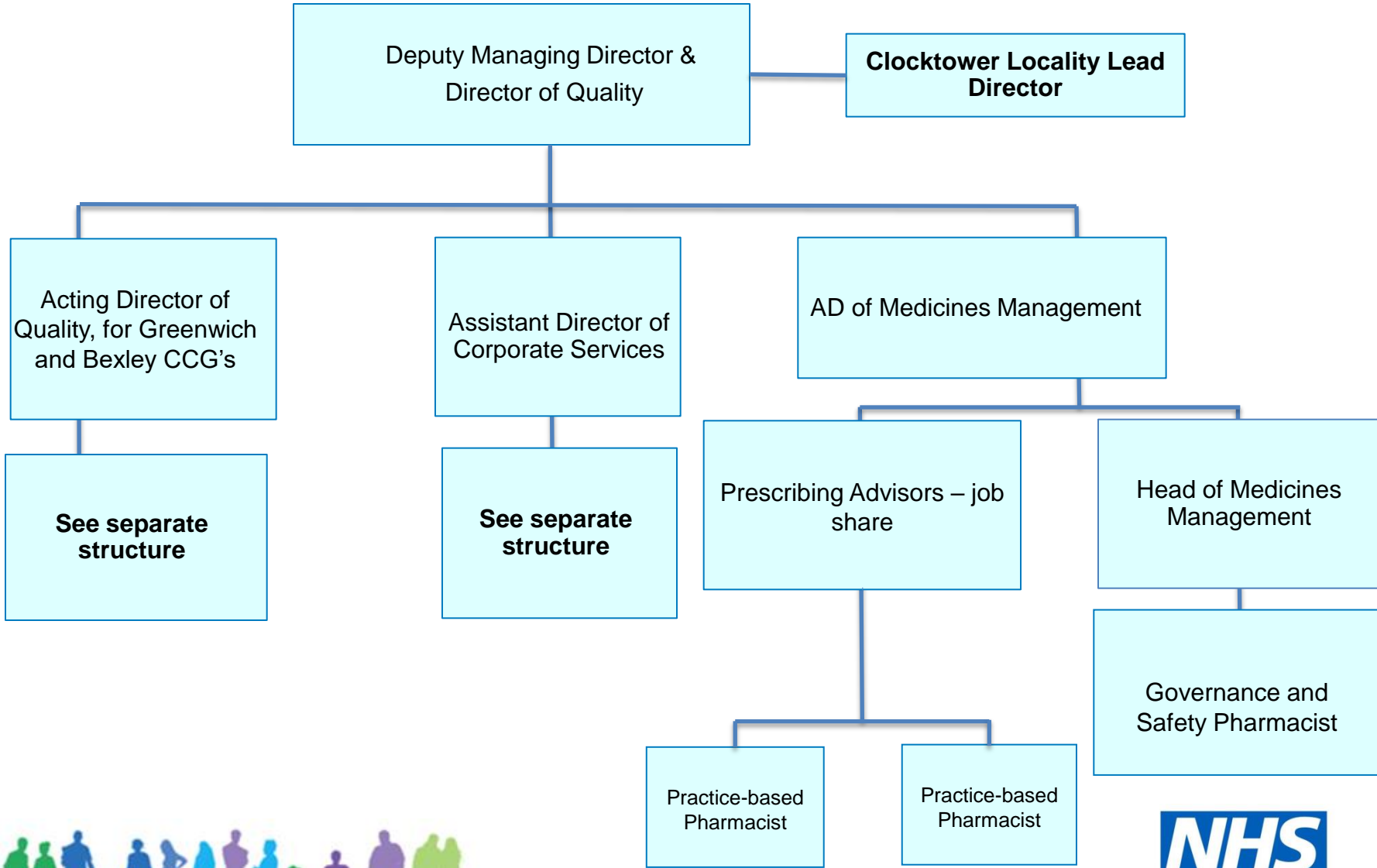
Director of Integrated Commissioning structure – Continuing Healthcare (CHC)



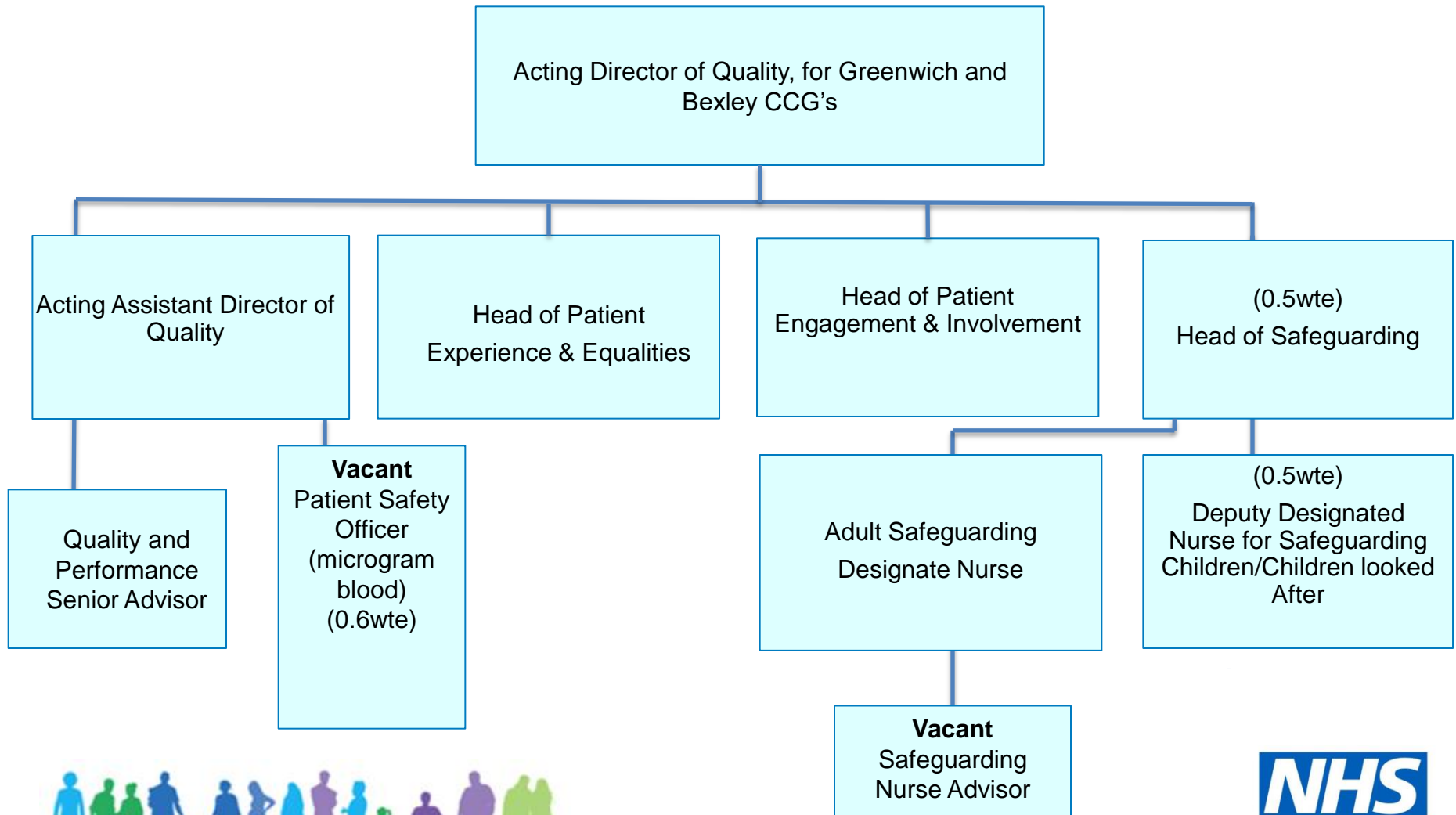
Chief Operating Officer structure - Planned & U&EC team



Director of Quality structure



Director of Quality structure - Quality, Safeguarding & Patient Experience



Supporting thriving communities



Bexley

Clinical Commissioning Group

Director of Quality structure - Corporate services

